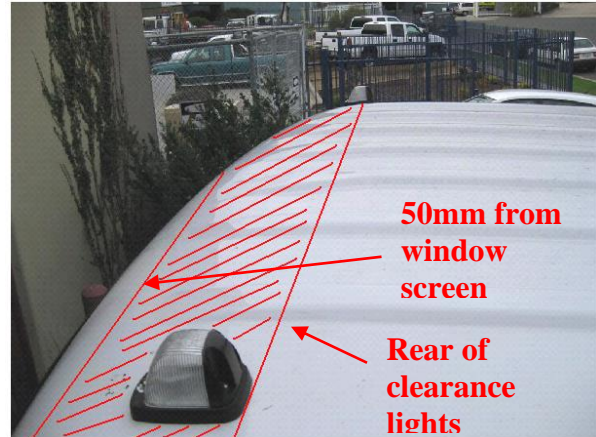


FITTING INSTRUCTIONS FOR UD PK & MK (Pre-Condor)

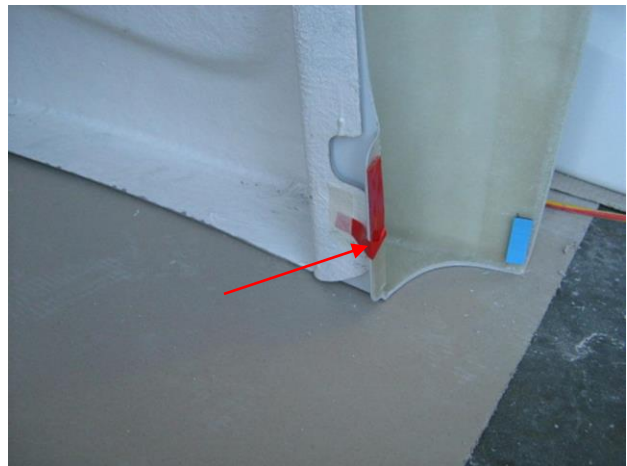
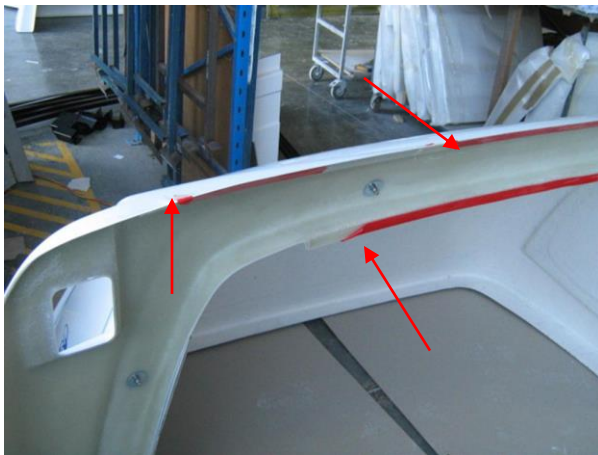
**PART NO: 01015UD(PK), 01016UD(PK), 01018UD(PK)
01013UD(MK), 01014UD(MK), 01017UD(MK)**

Fridgescoops Part No: 01024UDMK & 01026UDPK

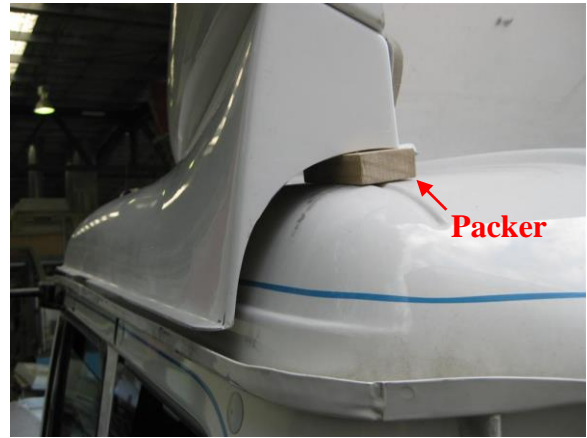
1. The cab roof must be clean and dry where the double sided tape will be in contact.



2. Clean the cab roof using Tite-R-Bond (supplied) in the areas as per photos above. Use a lint-free rag and ensure the bonding area is completely free from dust.



3. Peel the protective film from the double sided tape at each end and tape this film to the outer surface of the Fuelscoop PLUS. This will make it easier to remove the protective film once the Fuelscoop Plus is sitting in position.



4. Lift the Fuelscoop PLUS onto the cab roof and place packers under the front and rear corners. This will allow you to move the Fuelscoop PLUS into position without the double-sided tape touching the cab roof.



5. The rear of the clearance lights should sit approximately 10mm from the rear edge of the clearance light recess (Refer photo). Once the Fuelscoop PLUS is in position, peel the protection film off all the double sided tape and then remove the packers. Press down firmly to ensure the tape adheres to the cab roof.

Clamp
Bracket



Clamp Plate
(between Clamp
Bracket and scoop)

Use solid rubber strips
(supplied) if there is a
gap between scoop
flange and gutter.

- 6. Peel the red protection film off the double sided tape on each gutter clamp and place the gutter clamps in position (50mm from the front and rear edges). Place the galvanized clamp plate in position (on top of the Fuelscoop Plus flange) and tighten the gutter clamp bolts until the Fuelscoop PLUS sits firmly. Do not over-tighten these bolts as it may result in the flange cracking. (If cracks do occur in the Fuelscoop PLUS flange, they will only be in the gelcoat and will not affect the strength of the part).**



- 7. Clean down cab and Fuelscoop.**

PARTS LIST FOR UD PK AND MK FUELSCOOP

Part No.	Description	Qty
01013/14/17 UD(MK)	Fuelscoop (MK)	1
Or		
01015/16/18 UD(PK)	Fuelscoop (PK)	1

1. To mount the Fuelscoop to roof base:

K403/06	5/16'' x 1'' HEX HD SET SCREW	5
K403/07	5/16'' NYLOC NUTS	5
K101/10	5/16'' x 1'' FLAT WASHERS	10
K101/02	Locking plates	10
A9100/20	Acrylic Foam Double sided tape (20mm)	3.1m
A9100/10	Acrylic Foam Double sided tape (10mm)	1.5m
	5mm foam tape	0.3m

Fitting kit for each Fuelscoop

1. To mount the Fuelscoop to the cab roof:

KBASE/02	Base Clamp Bracket (UD)	4
KBASE/03	Base Clamp Plate (UD)	4
KBASE/04	6mm x 20mm pan hd set screw	8
	Solid rubber 12mm x 6mm (100mm long)	4

2. Tite- R-Bond Surface Cleaner 100ml