

FITTING INSTRUCTIONS FOR ISUZU FX & FY-SERIES CABS

PART NO: 04115-FXFY

1. Remove the 8 bolts from cab roof.
2. Sections of the cab roof will need to be cleaned to ensure good adhesion between double sided tape (on the base of the Fuelscoop) & cab roof.



Clean these areas using Tite-R-Bond 2287A (supplied) using a clean lint-free rag. Ensure the bonding area is completely free of dust.

3. Areas to clean:

- 3.1. Front:
- Clean front section between clearance lights as per photo 1.
 - Tops of inner 5 ribs as per photo 1 & 2

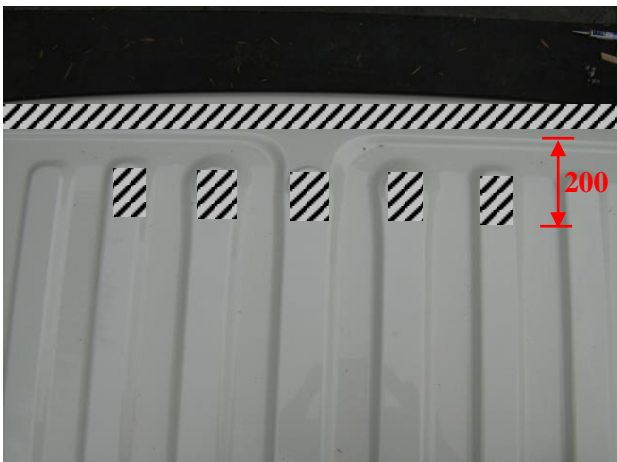


PHOTO 1

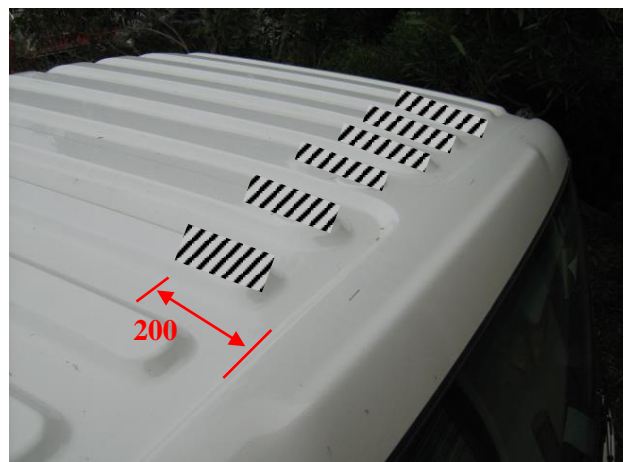


PHOTO 2

3.2. Sides:

- a. - Area between rear tapped holes and front clearance lights.
- b. - Top of second outer ribs as per photo 3.

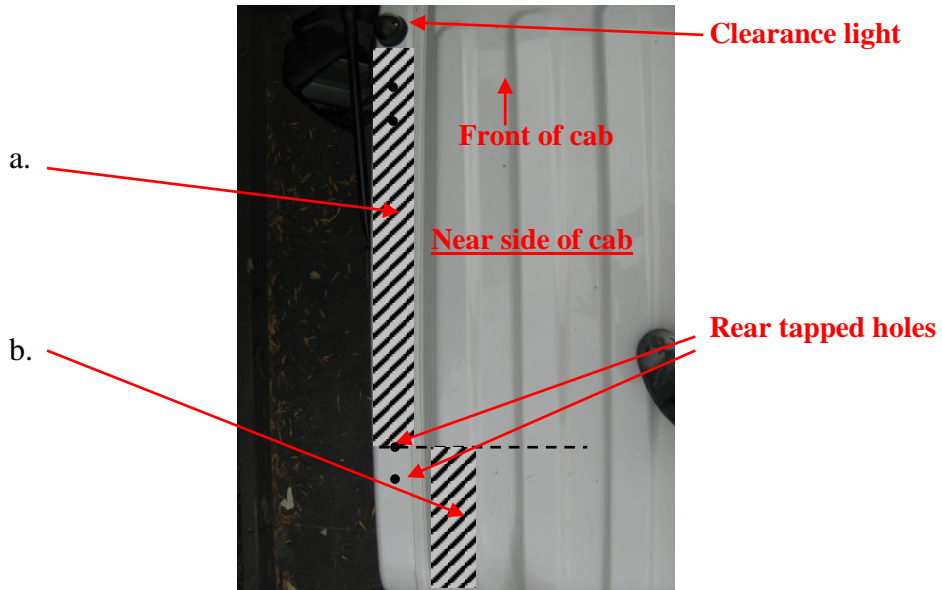


PHOTO 3

- 4. Place sealant around the 8 tapped holes in the cab roof.



5. Peel Protective film off the double sided tape from the inner front lip of the Fuelscoop.



6. Slightly peel the edges of remaining double sided tape strips so they stick outside the part.



7. Place some spacer blocks on the cab roof between each tapped hole. Place the Fuelscoop on the cab roof ensuring the kit does not contact the roof. Screw in the 8x40mm set screws supplied.



- When all bolts are in loosely, peel the protection film from the tape and remove the spacers. Gently lower the Fuelscoop onto the cab roof.



- Apply some pressure around the flanges of the Fuelscoop to ensure good contact between the double sided tape and cab roof. Tighten all the roof bolts.



- Clean fuelscoop and cabin.

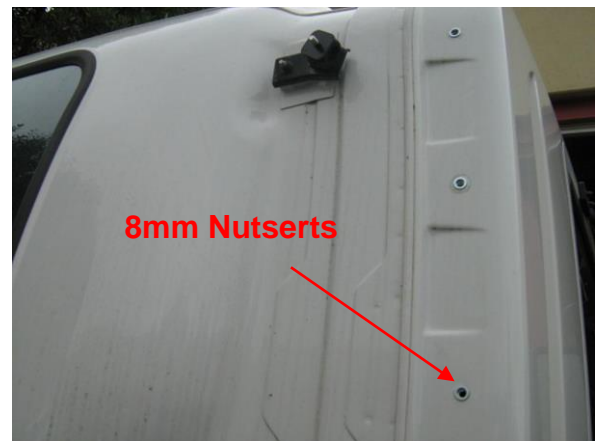


04115/2/3 Lower Extenders & 04115/5/6 Upper Extenders Fitting Instructions

11. Remove the air intake. Place the extenders in position and mark the drilling holes on the rear of the cab. (6 on the RHS, 5 on the LHS.)



12. Drill these holes to 11mm. Place sealastic sealant around and in each hole and fix the 8mm nutserts in the holes.



13. Clean the area where the extenders will sit using Tite-R-Bond as per instructions. Peel the protection strip off the double sided tape on each extender and bolt the extenders in position. **Be careful when drilling the top hole on each side as there is no double skin inside the cab.**



Peel protection film of double sided tape

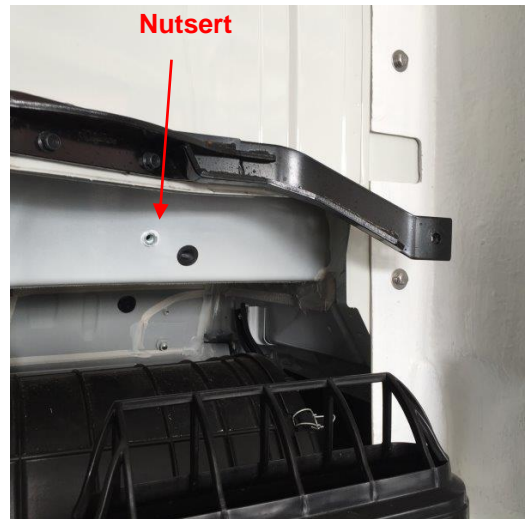


(When bolting the extenders, screw all the bolts in a few threads while holding the outside of the extenders away from the cab so the double sided tape doesn't touch the cab. Once the bolts are in, press the extenders against the cab and tighten the bolts.)

- Place the lower extender braces in position, as per photos. For the **RHS lower brace**, mark the 8mm nutsert position (behind the air intake), fix a nutsert and bolt the black angle bracket to this nutsert.



Mark nutsert position



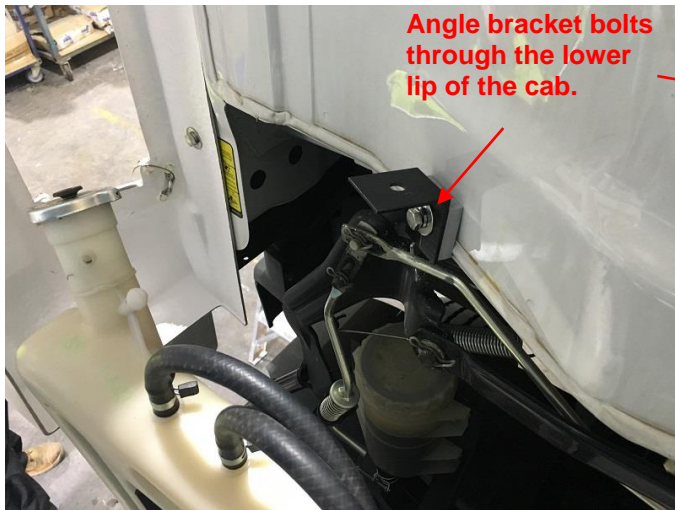
Nutsert

Bend brace to suit



RHS Lower brace

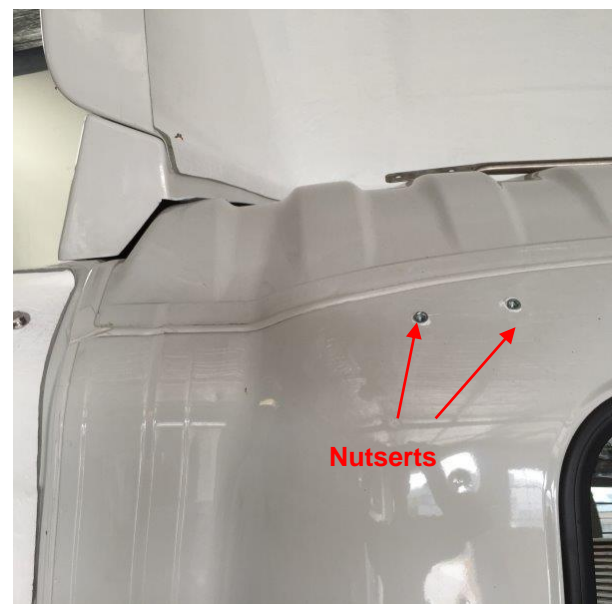
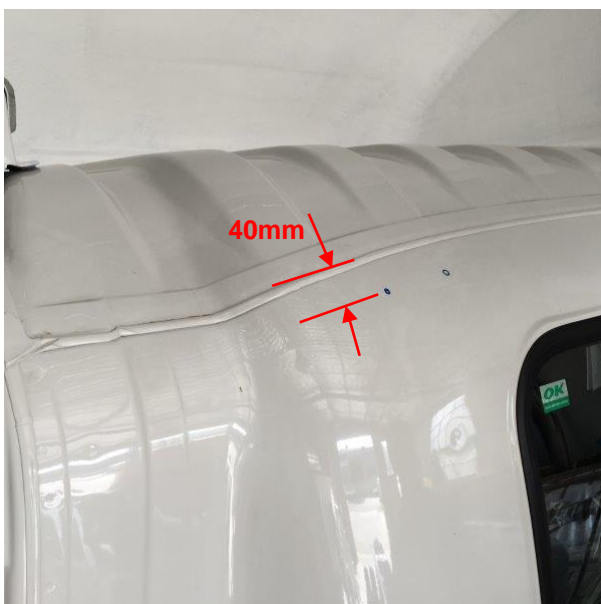
15. The **LHS Lower Brace** is mounted in a similar way, except it bolts through the lower flange of the cab (behind the radiator reserve).

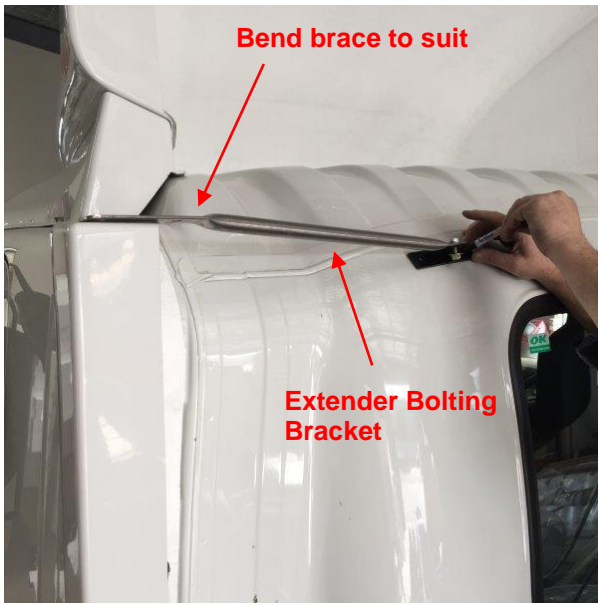


LHS Lower Brace

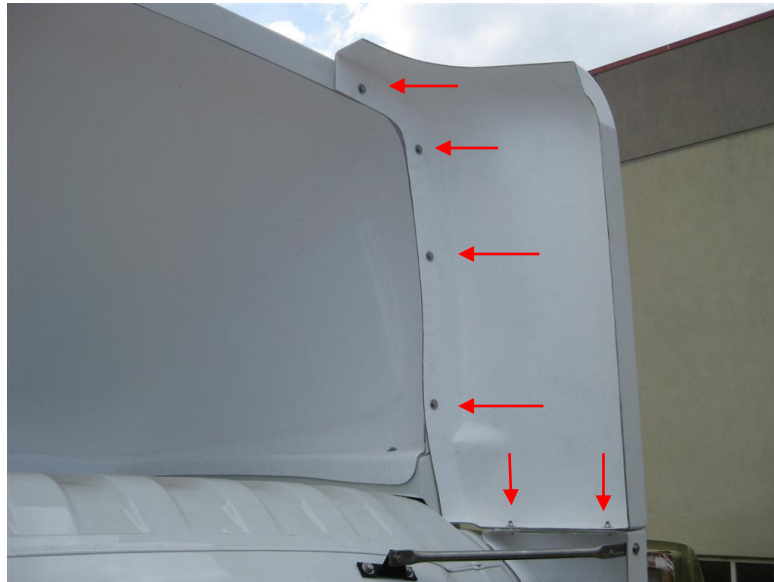
Bend brace to suit and bolt through the lower flange of the extender.

16. Loosely bolt the upper extender braces to the extender bolting bracket. Place these in position and mark the bolting holes as per photo. **The nutsert holes must be 40mm below the roof seam line so the nutsert clears the double skin inside the cab.** Drill the cab as per step 2 and bolt the extender bolting brackets to the rear of the cab. Bolt the upper extender braces to these.





17. Place the upper extenders in position and clamp them to the top flange of the lower extenders and the rear flange of the Fuelscoop PLUS. Drill the 6 holes for each extender and bolt using the nuts, bolts and washers supplied.



18. Clean down the cab and kit.



PARTS LIST FOR 04115-FX & 04115-FX(600)
CUSTOM KIT

<u>PART No</u>	<u>DESCRIPTION</u>	<u>QTY</u>
1. 01016ls-08	Fuelscoop	1
2. 04115/2	Lower extender (RHS)	1
3. 04115/3	Lower extender (LHS)	1
4. 04115/5	Upper extender (RHS)	1
5. 04115/6	Upper extender (LHS)	1

1. TO FIT FUELSCOOP PLUS TO CAB ROOF;

K405/40	8mm x 40mm HEX HD SET SCREW (s/s)	8
K101/05	5/16" SPRING WASHER	8
K101/10	5/16" x 1" FLAT WASHER	8

2. Tite-R-Bond	Surface Cleaner	50ml
-----------------------	------------------------	-------------

3. TO MOUNT THE 04115 EXTENDERS TO THE REAR OF THE CAB.

K405/25	8mm x 25mm hex hd set screw	11
K101/10	5/16"x1" Flat washer	11
K101/05	5/16" spring washer	11
K/NUTSERT8	8mm Nutsert	11

4. TO MOUNT THE EXTENDER BRACES TO THE REAR OF THE CAB (UPPER).

K405/25	8mm x 25mm hex hd set screw	4
K101/10	5/16"x1" Flat washer	4
K101/05	5/16" spring washer	4
K/NUTSERT8	8mm Nutsert	4
KBRACE620	Extender brace	2
K4115/20	Extender bolting bracket	2
K405/25	8mm x 25mm hex hd set screw	2
K101/10	5/16"x1" Flat washer	4
K405/26	8mm Nyloc nut	2

5. TO MOUNT THE EXTENDER BRACES TO THE REAR OF THE CAB (LOWER RHS).

K405/25	8mm x 25mm hex hd set screw	1	} In a magic seal bag
K101/10	5/16"x1" Flat washer	1	
K101/05	5/16" spring washer	1	
NUTSERT8	8mm Nutsert	1	
KACTROS/02	Angle Bracket	1	} Assembled
K405/25	8mm x 25mm hex hd set screw	1	
K101/10	5/16"x1" Flat washer	2	
K405/26	8mm Nyloc nut	1	
KBRACE540	Extender Brace	1	

6. TO MOUNT THE EXTENDER BRACES TO THE REAR OF THE CAB (LOWER LHS).

K405/25	8mm x 25mm hex hd set screw	1	} In a magic seal bag
K101/10	5/16"x1" Flat washer	2	
K405/26	8mm Nyloc nut	1	
K4122/34	10mm Nylon washer	1	
KACTROS/02	Angle Bracket	1	} Assembled
K405/30	8mm x 30mm hex hd set screw	1	
K101/10	5/16"x1" Flat washer	2	
K405/26	8mm Nyloc nut	1	
KBRACE620	Extender Brace	1	
KMAN/07	PVC Spacer	1	

7. TO BOLT THE EXTENDER BRACES TO THE LOWER EXTENDERS.

K405/25	8mm x 25mm hex hd set screw	4
K101/10	5/16"x1" Flat washer	8
K405/26	8mm Nyloc nut	4
K4122/34	10mm Nylon washer	4

8. TO BOLT THE UPPER EXTENDERS TO THE REAR FLANGE OF THE ROOF DEVICE AND THE TOP FLANGE OF THE LOWER EXTENDERS.

K405/25	8mm x 25mm hex hd set screw	12
K101/10	5/16"x1" Flat washer	24
K405/26	8mm Nyloc nut	12