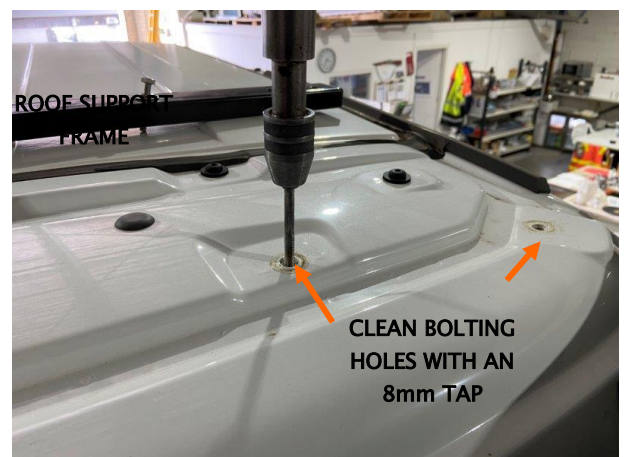
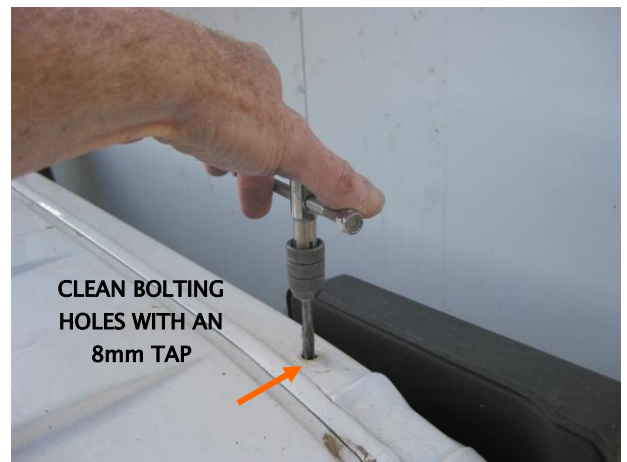
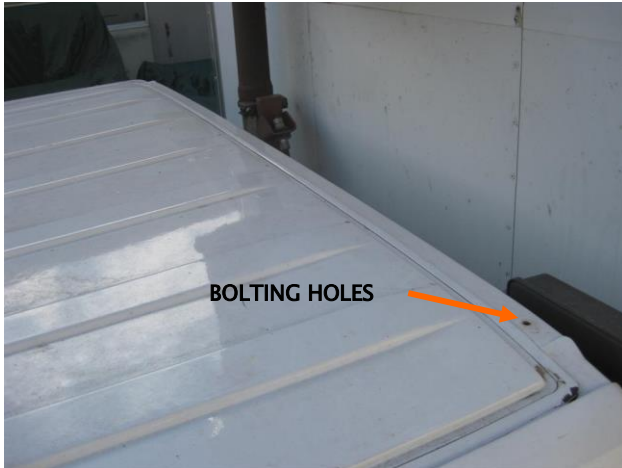


FITTING INSTRUCTIONS FOR Stralis, S-WAY, X-WAY CABS

Part No 01020-STR, 01020-STR(H), 01020-STR(D)

1. Remove the two black plastic plugs from rear of cab roof and the four black plastic plugs from the front of cab roof. **Clean the bolting holes with an 8mm tap to ensure the bolts go in cleanly.** Place front Roof support frame on roof and loosely bolt to cab roof through the two outer slots in the frame (as per photo). Don't bolt the two inner bolts holes yet.



2. Loosely bolt the rear Roof Support Frame to the cab as per photo using the 8mm x 60mm set screws only. (Don't use the spring washers and 8mm x 38mm flat washers yet because, these bolts will fit through the 2 rear holes of the Fuelscoop Plus when the Fuelscoop Plus is lifted on the cab. You will then remove these bolts and re-bolt them with the spring washers and flat washers when you tighten the scoop to the cab roof.)

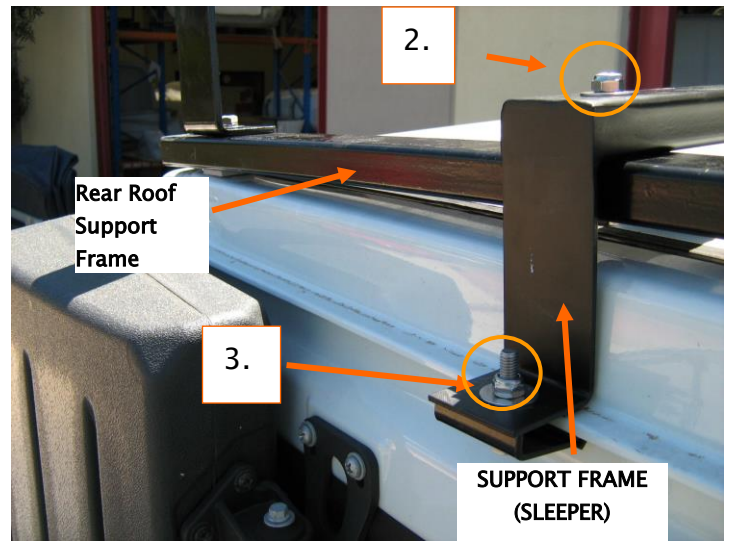
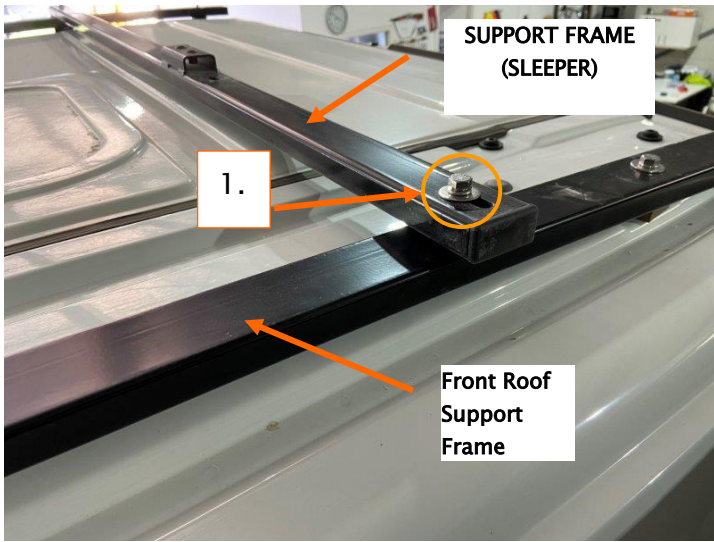


Rear Roof Support Frame

3. Fill the four tapped holes across the front with Urethane glue and bolt the front Support Frame to the four tapped holes, using 10mm spacer blocks and 50mm bolts supplied.

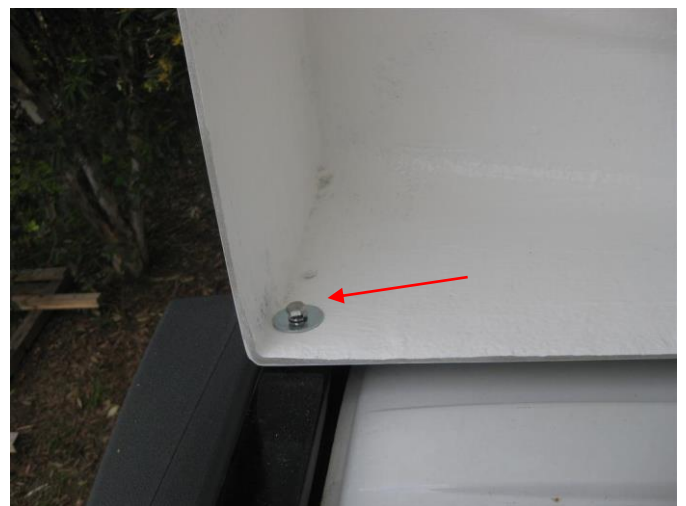


Front Roof Support Frame

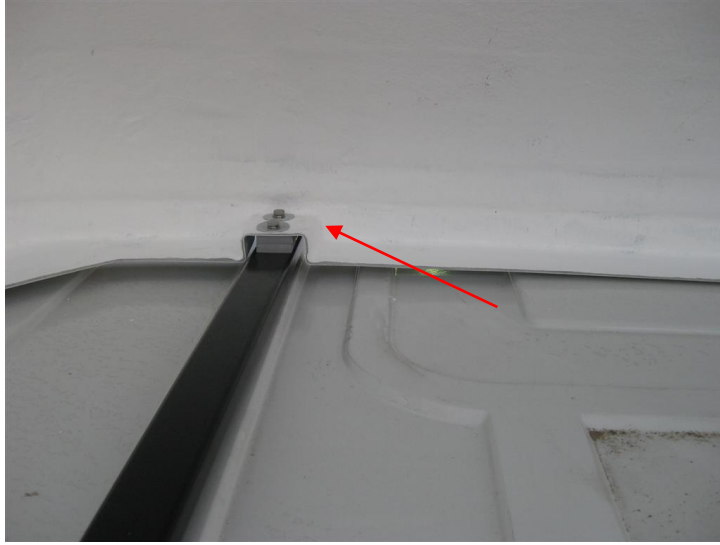


4. Fasten the Support frame (sleeper) to the cab by:
 1. Bolting the front through the front Roof support frame (use M8 x 60mm set screws).
 2. Bolting the rear through the rear Roof support frame.
 3. Clamp the rear to the gutter at rear of the cab.

5. Place the Fuelscoop on cab and place it over the Support frame (sleeper) and on top of the Roof Support Frame. The 8mm x 60mm bolt should protrude through the 2 holes on the rear of the scoop.



6. Remove the 8mm x 60mm set screws that bolt the roof support frame to the roof and using spring washers and 5/16" x 1 1.2" flat washers, re-bolt them through the 20mm holes in the rear of the fuelscoop.



7. Bolt the front of the Fuelscoop to the Support Frame (Sleeper)



8. Tighten all bolts and clean down the Fuelscoop.

PARTS LIST FOR FUELSCOOP ON STRALIS S-WAY

1. TO BOLT FRONT ROOF SUPPORT FRAME TO CAB ROOF;

K01016/Str/01	Roof support frame	1	
KMAN/07	10mm PVC spacer	4	} In a magic seal bag
K405/50	8mm x 50mm hex hd set screw	4	
K101/05	5/16" spring washer	4	
K101/10	5/16" x 1" flat washer	4	

2. TO BOLT REAR ROOF SUPPORT FRAME TO CAB ROOF;

K01016/Str/01	Roof support frame	1
K405/60	8mm x 60mm hex hd set screw	2
K405/28	5/16" x 1 1/2" flat washer	2
K101/05	5/16" spring washer	2
KMAN/07	10mm PVC spacer	2

3. TO FASTEN SUPPORT FRAME (SLEEPER) TO THE FRONT & REAR SUPPORT FRAME

K101016STR/02	Support Frame (Sleeper)	2	} <u>Bolted to the Front Roof Support</u>
K405/60	8mm x 60mm Hex Hd set screw	2	
K405/26	8mm nyloc nut	2	
K101/10	5/16" x 1" flat washer	4	
K405/60	8mm x 60mm hex hd set screw	2	} <u>Bolted to the Rear Roof Support Frame</u>
K405/26	8mm nyloc nut	2	
K101/10	5/16" x 1" flat washer	4	

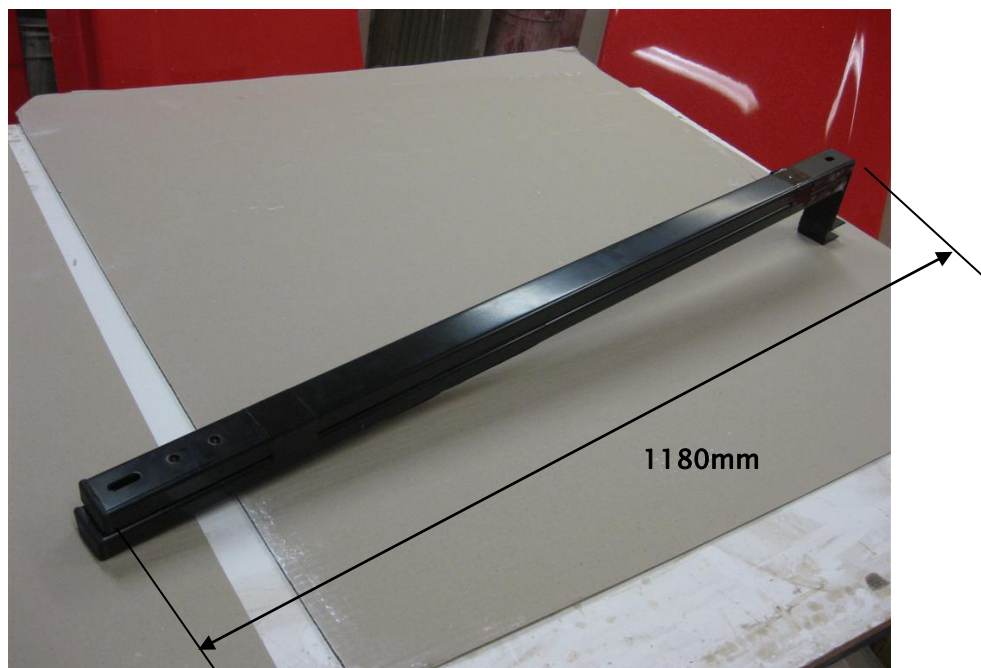
4. TO FASTEN SUPPORT FRAME(SLEEPER) TO THE CAB:

K405/35	8mm x 35mm hex hd set screw	2	} (GUTTER) In a magic seal bag
K101/10	5/16" x 1" flat washer	4	
K405/26	8mm nyloc nut	2	
K434/01B	Clamp bracket B	2	

5. TO BOLT FUELSCOOP PLUS TO ROOF FRAMES;

K405/25	8mm x 25mm hex hd set screw	4
K101/05	5/16" spring washer	4
K405/28	5/16" x 1 1/2" flat washer	4

Support Frame for a S-WAY Day cab.



To modify Support Frame (Sleeper) to suit a Stralis S-WAY day cab, cut the length down to 1180mm.