

FITTING INSTRUCTIONS Hino 300 Series (2011-current)

PART NO: 01011Hi-11 and 01021Hi-11



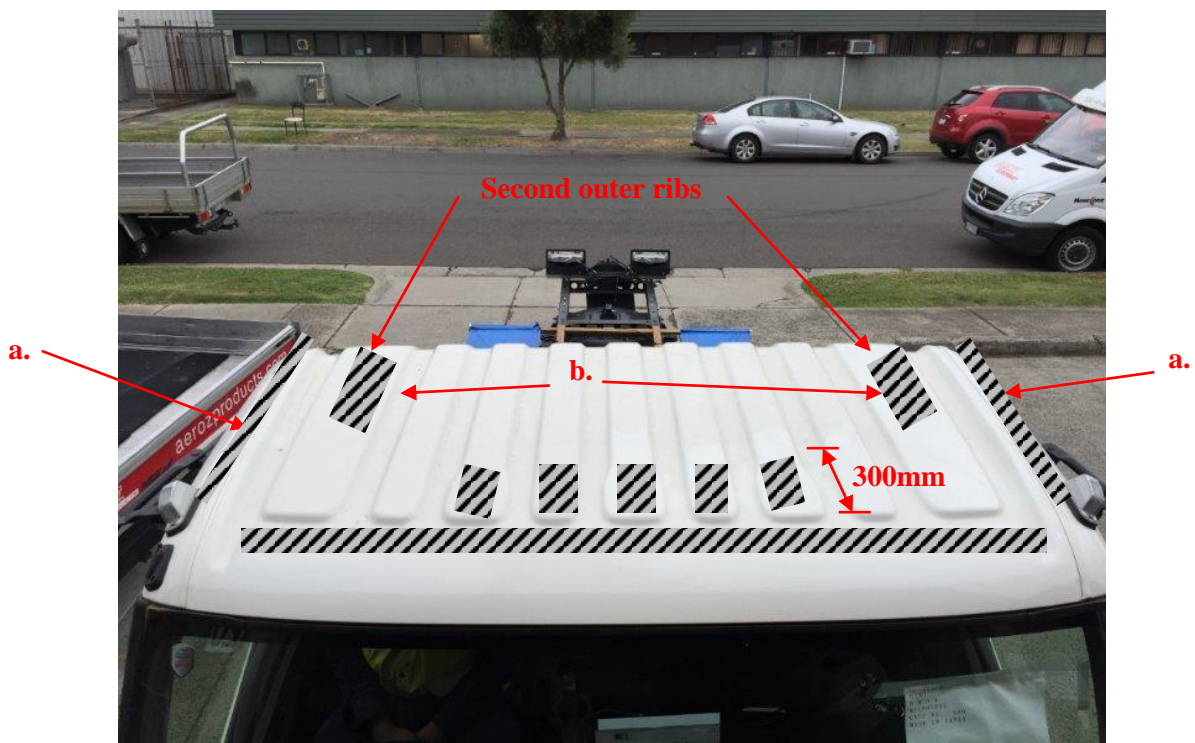
1. Remove the 8 bolts from cab roof.

2. Sections of the cab roof will need to be cleaned to ensure good adhesion between double sided tape (on the base of the Fuelscoop) & cab roof.

Clean these areas using Tite-R-Bond 2287A (supplied) using a clean lint-free rag. Ensure the bonding area is completely free of dust.

3. Areas to clean:

- 3.1. Front:
 - Clean front section between clearance lights.
 - Tops of inner 5 ribs.



3.2. Sides:

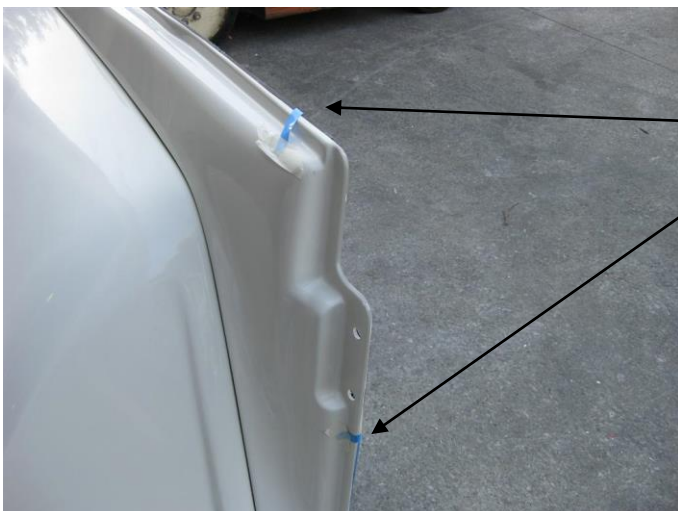
- a. - Area between rear tapped holes and front clearance lights.
- b. - Top of second outer ribs as per photo 3.



- 4. Place sealant in and around the 8 tapped holes in the cab roof.**



- 5. Peel protection film off the double sided tape on the 3 inner strips.**



- 6. Slightly peel the edges of remaining double sided tape strips so they stick outside the part.**



7. Place some spacer blocks on the cab roof between each tapped hole. Place the Fuelscoop in position on the cab roof ensuring the kit does not contact the roof.



8. Gently screw in the M8 x 40mm set screws supplied.



9. When all bolts are in loosely, peel the protection film from the tape and remove the spacers. Gently lower the Fuelscoop onto the cab roof.



10. Apply some pressure around the flanges of the Fuelscoop to ensure good contact between the double sided tape and cab roof.

11. Tighten all the roof bolts.



12. Clean Fuelscoop and cabin roof.

Fitting Kit for each Fuelscoop:

1. TO FIT FUELSCOOP TO CAB ROOF;

K405/40	8mm x 40mm HEX HD SET SCREW (s/s)	8
K101/05	5/16" SPRING WASHER	8
K101/10	5/16" x 1" FLAT WASHER	8

2.	Tite-R-Bond	Surface Cleaner	50ml
----	-------------	-----------------	------